

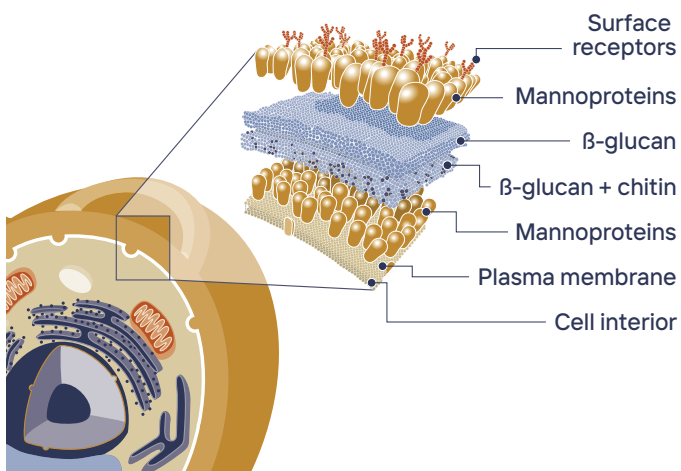
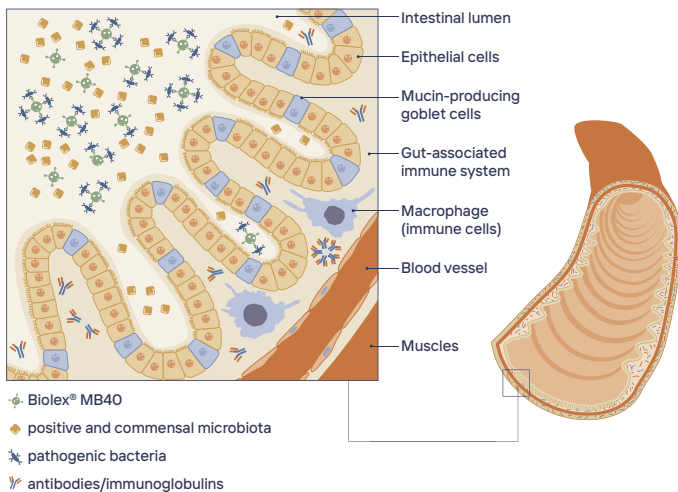
# Biolex MB40

## Prebiotic! Pro health!

Leiber Biolex® MB40 is characterized by its high content of beta-glucans and mannan-oligosaccharides (MOS) and a special surface structure with associated high adsorption power.

In a complex production process, the yeast cell walls are separated from the cell interior (yeast extract). The active segments of the cell wall are thus gently released without destroying the surface structure.

The positive effects, in particular on the microbiome (prebiotic effect), the immune system and binding activities of pathogens and mycotoxins have been scientifically proven many times.



## Biolex® MB40 product benefits:

	prebiotic effect
	intestinal health and protection
	displaces pathogens and binds mycotoxins and alkaloids
	supports immune system

## Biolex® MB40 composition:

Analytical constituents and contents	
Crude protein:	28.0%
Crude fat:	7.5%
Crude fibre:	0.5%
Crude ash:	4.0%
Lysine:	2.0%
Methionine:	0.5%
Mannan oligosaccharides (MOS):	20–25%
Glucans:	25%
Physical properties	
Structure:	dust-fine product
Colour:	light brown
Odour:	typical of brewers' yeast
Minimum shelf life:	3 years
Dosage per animal per day	
600kg):	approx. 15g
Pony (350kg):	approx. 10g
Horse (600kg) in acute stress situations (on a treatment series basis):	approx. 20g
Rearing:::	approx. 5–10g

### Note for sport horses:

Compliant with Anti - Doping and Medication Control (ADMR) according to FN ([www.pferd-aktuell.de](http://www.pferd-aktuell.de)). Special regulations in international sport (FEI) must be observed!



[leiber-pferd.de/en/](http://leiber-pferd.de/en/)